

LOUDSPEAKERS METAL SOUND PROJECTORS  
BI-DIRECTIONAL

- ▶ CELL10BT/EN
- ▶ CELL10BT/ENC

EN54-24

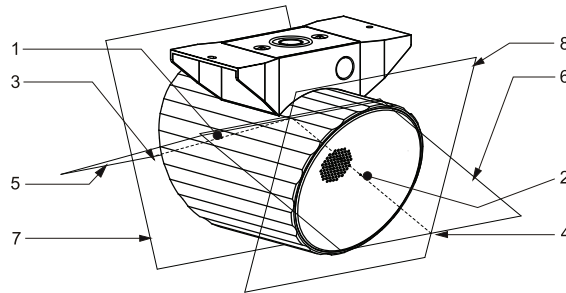


## INSTALLATION INSTRUCTIONS

EN54-24:2008

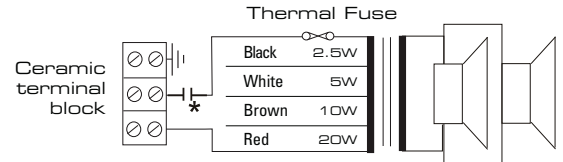
Certificate No: 0359-CPR-00287 TYPE B

1. LOUDSPEAKER ENCLOSURE
2. LOUDSPEAKER ENCLOSURE
3. REFERENCE AXIS 1
4. REFERENCE AXIS 2
5. HORIZONTAL PLANE 1
6. HORIZONTAL PLANE 2
7. REFERENCE PLANE 1
8. REFERENCE PLANE 2



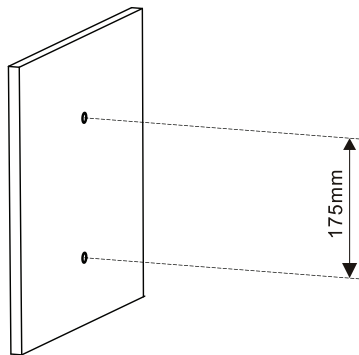
### Circuit Diagram

100VCOM.



### ▶ CELL10BT/ENC

\*with capacitor

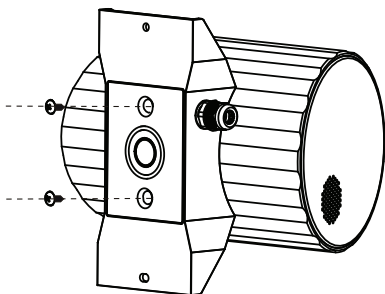


#### ▶ STEP 1

Select a suitable position to mount the loudspeaker. Offer the speaker to the wall or ceiling and mark through the mounting holes to position the fixing points. Use a spirit level to ensure that the speaker will be level when fixed. Drill 2 holes, 174mm apart. Use suitable raw plugs to secure the fixings.

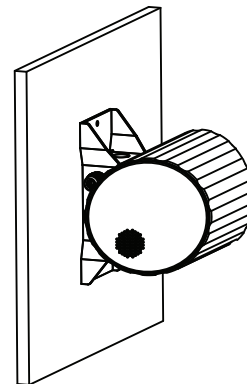
#### ▶ STEP 2

Remove the rear termination cover from the speaker by removing the 2 screw fixings. Terminate the speaker cabling into the terminal block via suitable cable glands. Select the correct tapping when terminating the speaker. See the circuit diagram above.



#### ▶ STEP 3

Once the speaker has been wired replace the rear termination cover using the 2 fixings provided. The speaker can now be positioned over the fixing holes made in the mounting surface at Step 1.



#### ▶ STEP 4

Use suitable fixings to hold the speaker securely to the surface. The speaker installation is now complete.



### Penton UK Ltd

Unit 2 Teville Industrials | Dominion Way | Worthing | West Sussex | BN14 8NW  
T: +44 (0)1903 215315 | F: +44(0)1903 215415 | E: sales@pentonuk.co.uk

[www.pentonuk.co.uk](http://www.pentonuk.co.uk)

OCTOBER 2014



RoHS

