

DATA SHEET

## PAN SPEAKER P 08-PI - PASSIVE COLUMN SPEAKER



The **Pan Speaker P 08-Pi** is a passive speaker mounted in an attractive compact design which is suitable for speech and music applications. The loudspeaker is equipped with eight 3,5" low frequency drivers content in a closed aluminium housing. The housing can be delivered in all RAL colours on customer's request. The chassis are protected against external influences by a perforated metal sheet. There is a two-pin plug connection at the back of the **P 08-Pi**. At the back and sides of the **P 08-Pi** there are nuts with adjustable slot nuts which enable wall mounts and brackets. The **P 08-Pi** can be used individually or in combination with the P S-208 Subwoofer.



### FEATURES

High efficiency, integrated protection circuits, high speech intelligibility even in the most adverse acoustic environments, sleek and unobtrusive design

For the **Pan Speaker series** there is a wide range of mounting accessories for fixed installations and mobile applications.

### ADDITIONAL OPTIONS

- Colour option
- 100V
- IP 54

All **Pan Speakers** are developed, designed and manufactured by Pan Acoustics which uses high quality materials according to the stringent criteria.

### MADE IN GERMANY

### APPLICATIONS

Churches, Mosque, Museum, Hotels, University, Live Sound, Train stations, Airports, Sports grounds, Parliament, Conference rooms, Auditorium, Shopping centre, A/V Installations

## TECHNICAL DATA PAN SPEAKER P 08-PI

### ACOUSTIC SPECIFICATION

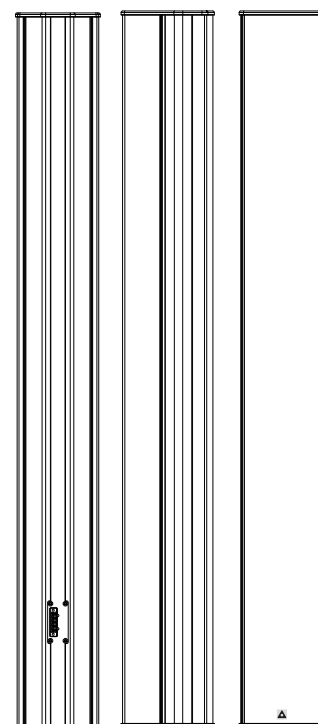
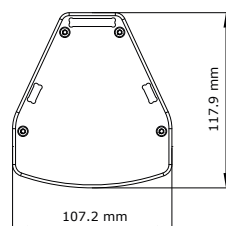
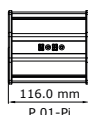
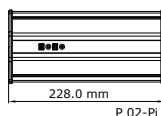
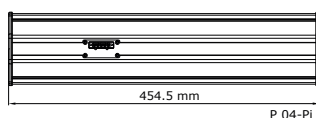
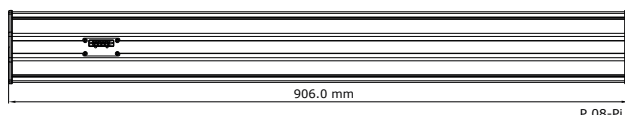
<b>Type</b>	passive column speaker
<b>Frequency response:</b>	150 Hz - 17 kHz (+3/-10 dB)*
<b>Drivers:</b>	8 x 3,5"
<b>Rated Power:</b>	600 W (peak <sub>20ms</sub> ) / 400 W (program) / 200 W (nominal)
<b>Recommended amplifier:</b>	Lab.Gruppen Lucia-Serie or IPD 1200
<b>Sensitivity:</b>	95 dB 1W/1m
<b>Maximum SPL:</b>	129 dB* @1m
<b>Nominal impedance:</b>	8 Ohm
<b>Dispersion</b>	
<b>Horizontal:</b>	100° (3 kHz), 60° (10 kHz)
<b>Vertical:</b>	15°
<b>Connectors:</b>	1 x 5-pol plug contact (In/Out)
<b>Temperature range:</b>	-10°C - +50°C environment

\*anechoic halfspace conditions

### GENERAL SPECIFICATION

<b>Enclosure:</b>	Aluminium-Profile
<b>Grille:</b>	Powder coated perforated steel
<b>Colour:</b>	Aluminium RAL 9006
<b>Dimensions (HxWxD):</b>	906 x 107.2 x 117.9 mm
<b>Weight:</b>	4,9 kg
<b>Mounting accessory:</b>	Different mounting options available

## TECHNICAL DRAWING PAN SPEAKER 02-PI, 04-PI/R, 08-PI/R, 8-15-PI/R



**MADE IN GERMANY** - All products are designed, developed and manufactured by Pan Acoustics in Germany.

Pan Acoustics reserves the right to change product specification without notice.

[www.pan-acoustics.de](http://www.pan-acoustics.de)

Pan Acoustics GmbH | Lindener Str. 15 | D-38300 Wolfenbüttel | Germany | Tel.: +49 (0) 5331 900 95 70 | E-Mail: [contact@pan-acoustics.de](mailto:contact@pan-acoustics.de)