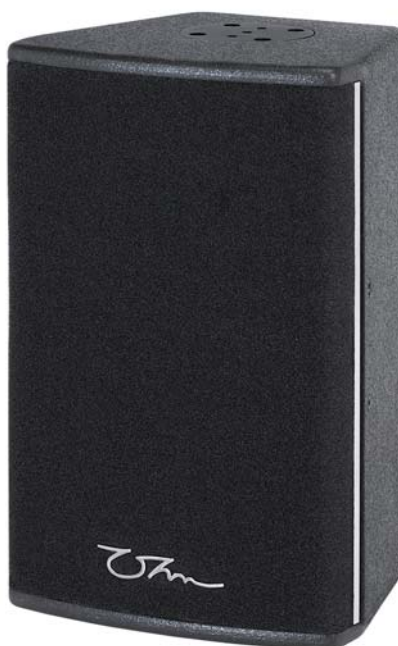


BRT-8 Datasheet



The BRT-8 is a high performance compact cabinet which is ideally suited to both mobile use and fixed installation, offering extremely flexible mounting options including a top hat and both horizontal and vertical mounting yokes, rotatable horns, integrated handle and internal passive crossover designed to match the voicing of other products in the series, all achieving a flat, linear frequency response.

The discreet design with reticulated foam front and acrylic textured paint finish and multiple integrated fixing points achieves a high class look suitable for any application.

Designed with an OHM 8" proprietary 200 W, 12 Ohm woofer and 1" compression driver, the internal passive crossover ensures a linear, usable frequency response of 75 Hz to 25 kHz (-10 dB) across 90°x 60° dispersion with rotatable horn. A maximum SPL of 126 dB (peak).

Sharing voicing characteristics with the rest of the BR series allowing them to be used simultaneously, keeping a consistent tone.

Mounting options include integrated aluminium top-hat and horizontal cradle fixing points for use with the BRC-8 Horizontal, BRC-8 Vertical Yoke. Other fixings can be used with this cabinet such as the fixed large wall bracket (LWB) and pan and tilt wall bracket (LWB-PT).

The rear cast aluminium connection plate has two 4 pin speakON® connectors fitted as standard, one input and one link. The speakON® connectors are wired on pins +1-1, with pass through of pins +2-2.

Key Features:

- Suitable for install and portable
- 12 Ohm Impedance
- Rotatable 90° x 60° horn for enhanced flexibility
- 126 dB SPL in a compact cabinet
- Multiple mounting options available

Technical Specifications

Design

8" Full Range Cabinet,
Reflex Tuning

Impedance

12 Ohm, Minimum 10 ohm @ 210 Hz

Power Handling (AES)

200 Watts (continuous)

Max. Power Handling (AES)

400 Watts (program)
800 Watts (peak 10 ms)

Sensitivity 2.83V / 1m

96 dB

Max. SPL

120 dB cont
126 dB peak

Frequency Response (±3 dB)

107 Hz - 23 kHz

Usable Frequency Range (-10 dB)

75 Hz - 25 kHz

Dispersion

90° x 60° , Rotational

SYSTEM OPERATION

Recommended Amplification

200 - 500 Watts

System Controller

Ohm DSP Solutions

Speaker Cables

Min - 2 x 2.5 mm²
Preferred - 2 x 4 mm²

PRODUCT FEATURES

Components

1 x 8" Low Frequency Driver
1 x 1" Horn loaded Compression Driver

Crossover

Passive - 1.7kHz
Active - * LPF -
HPF - 110Hz

Connectors

2 x 4 pole Speakon Connectors

Dimensions (H x W x D mm)

458 x 284 x 250

Weight (kg)

13.4

Shipping Weight (kg)

14.4 (1 cabinet per carton)

Colour

Black

Options

Available in white or RAL colours on request

Rigging

4 x M6 mounting points for installation
brackets, omni-mounting point for stand or
truss adaptor, (optional 2 x 3 point adaptor for
Horizontal Mounting)

HARDWARE

Fitted as Standard

Small Cast aluminium top hat, Blanking plate

Optional

Horizontal cradle Base, BRC-8 cradle vertical,
BRC-8 cradle horizontal, LWB-PT large wall
bracket pan and tilt with 35mm spigot, LWB
large wall bracket, SS-1 speaker stand, TP-1
adjustable threaded pole, TP-1P threaded
Mounting Plate.

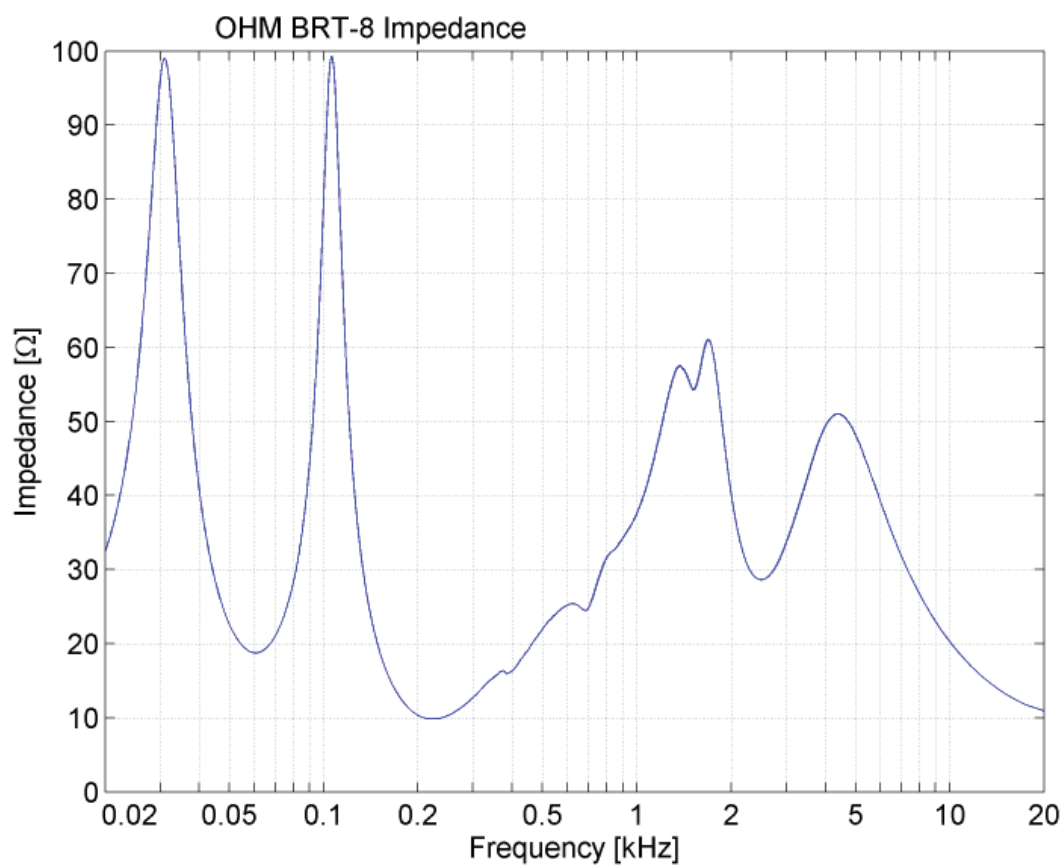
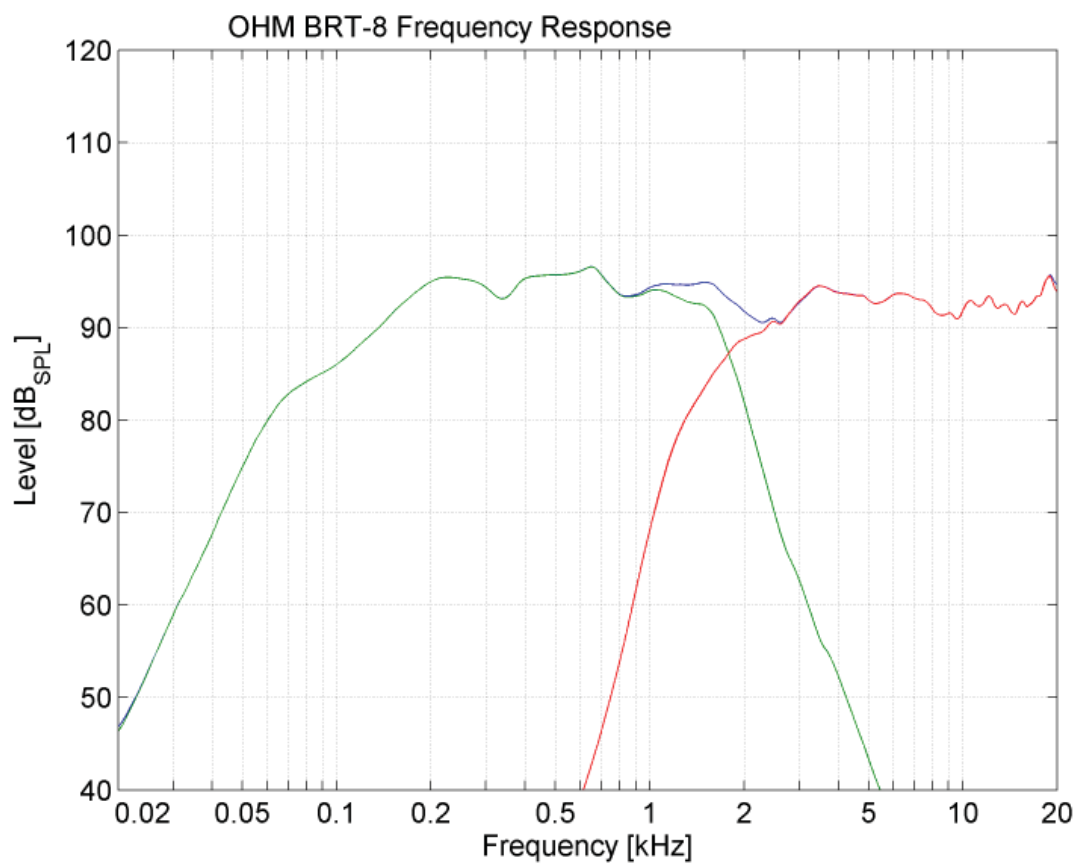
Additional Descriptive Data

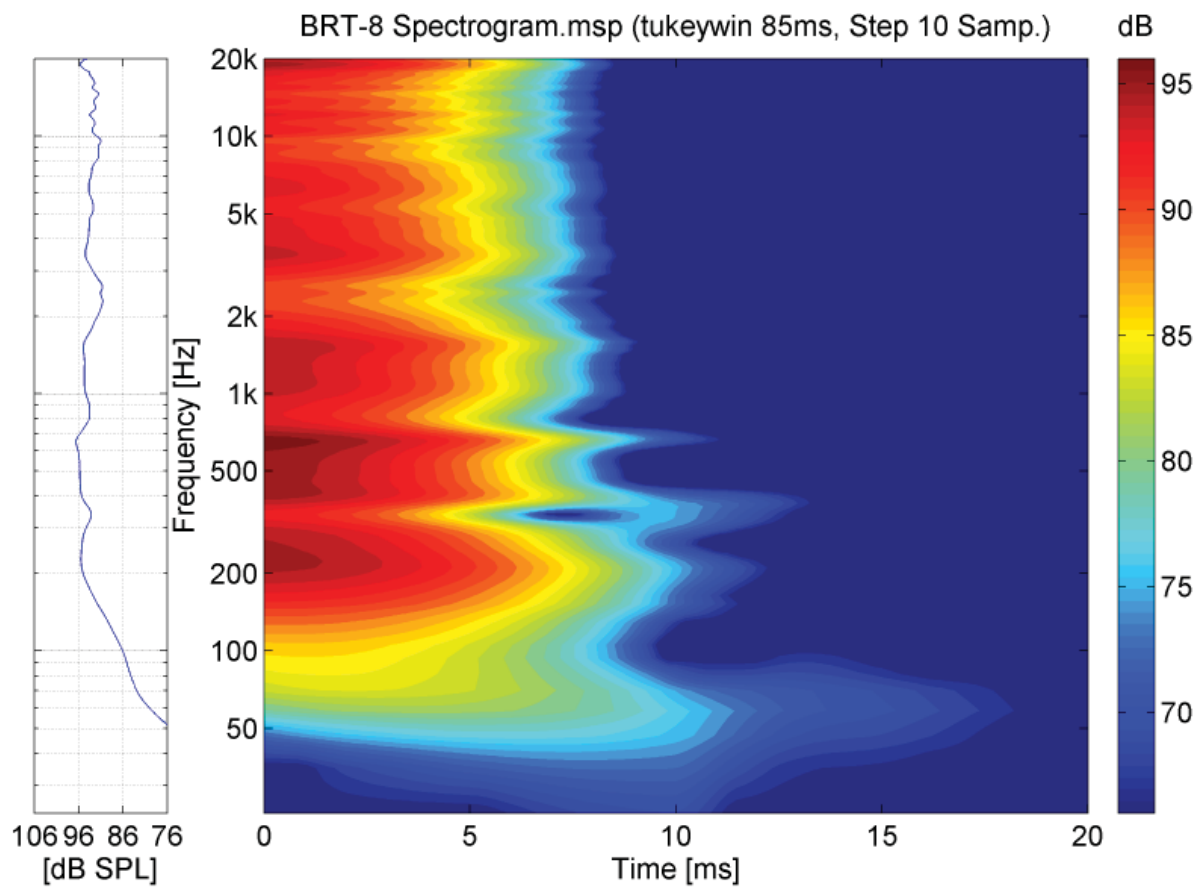
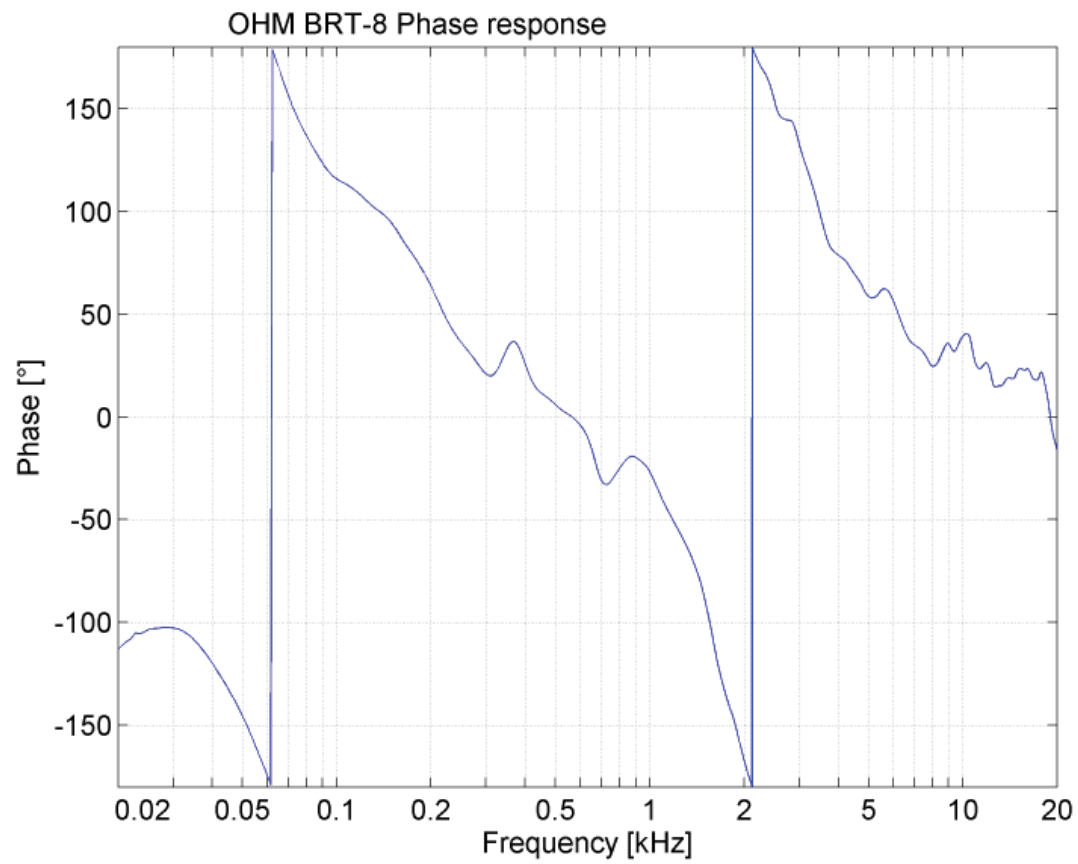
Birch plywood construction, with durable
scratch resistant black textured paint finish,
kick-proof steel grill and black foam with Ohm
logo.

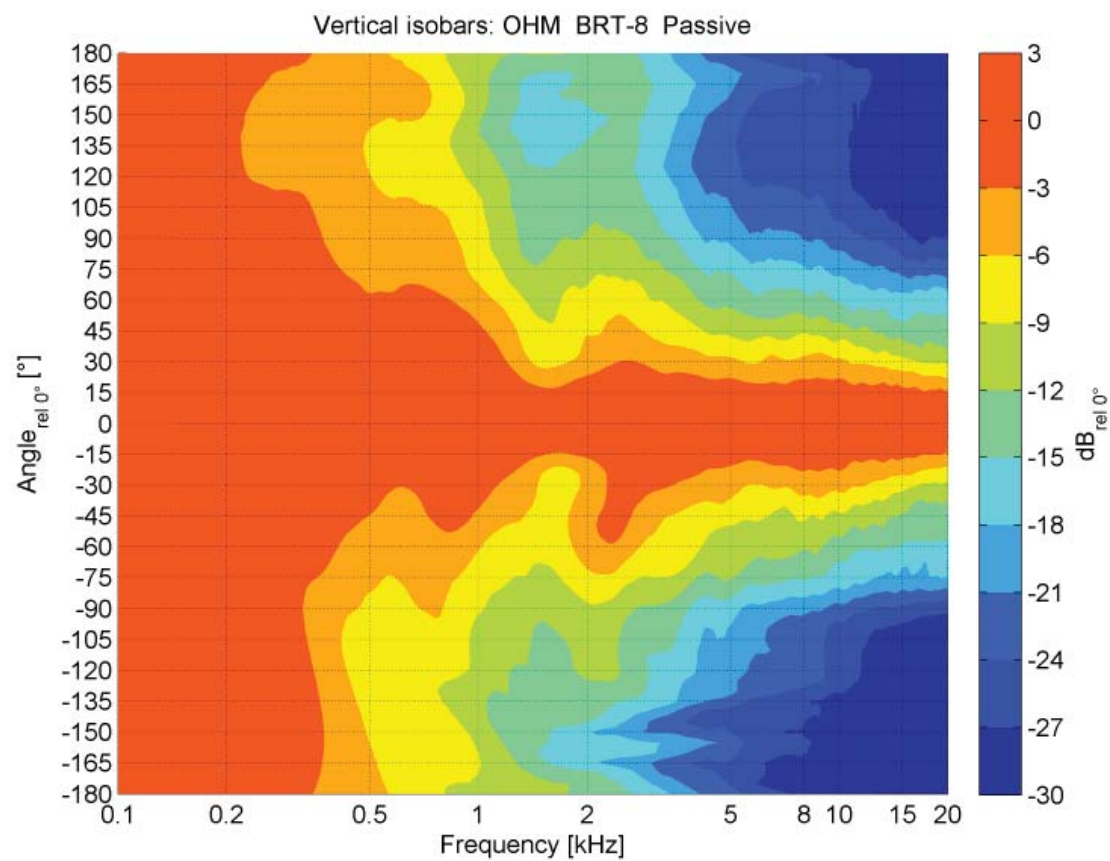
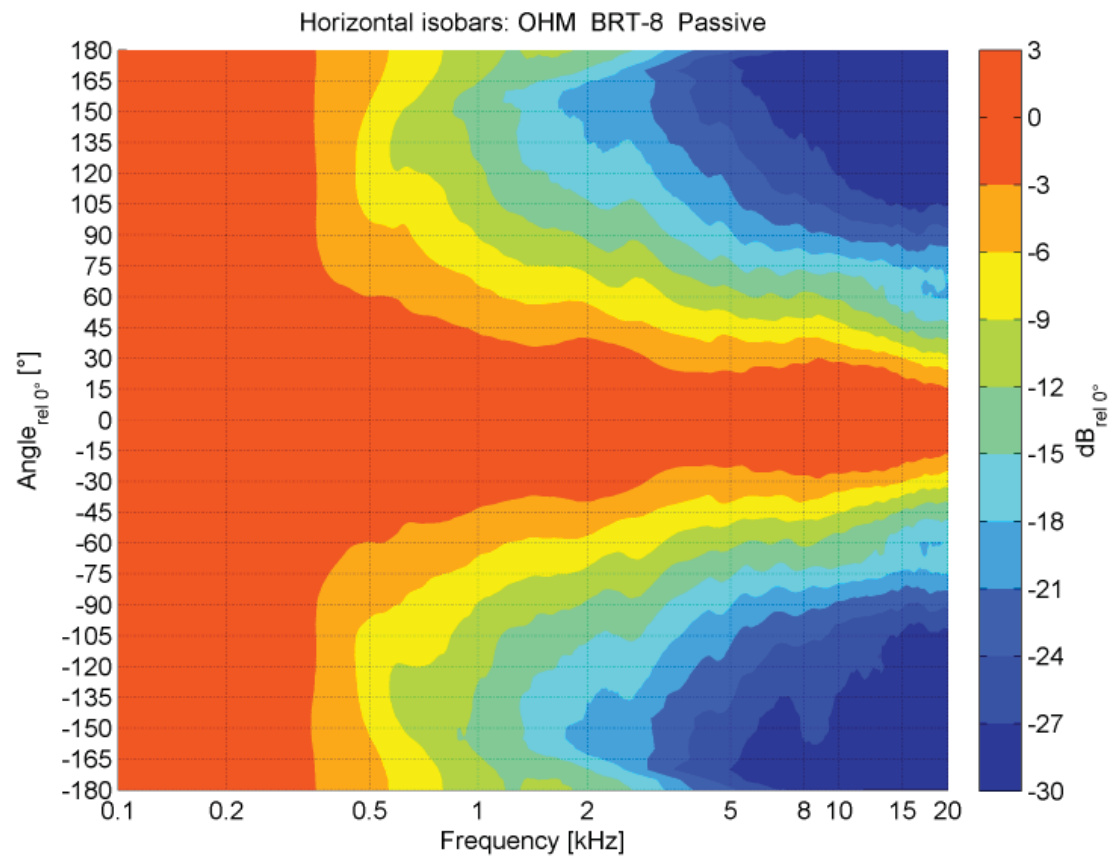
Recommended filter settings are available on the website ohm.co.uk/download

* All presets from the OHM library.

BRT-8 Measurements







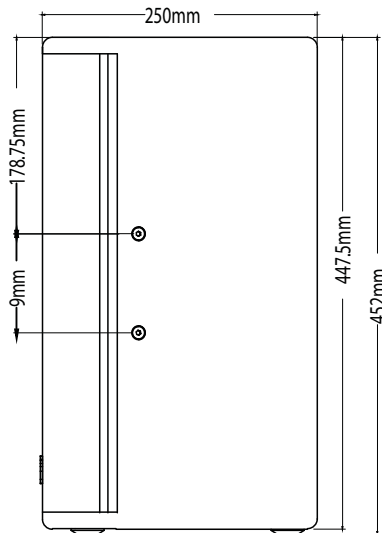
All Measurements are executed by the IFAA Institute for Acoustics in Aachen, Germany
measurement conditions 4Pi environment for full range cabinets, 2Pi environment for subwoofers.

BRT-8 Dimensions

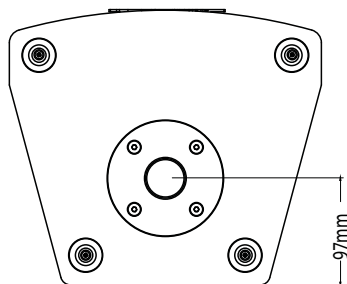
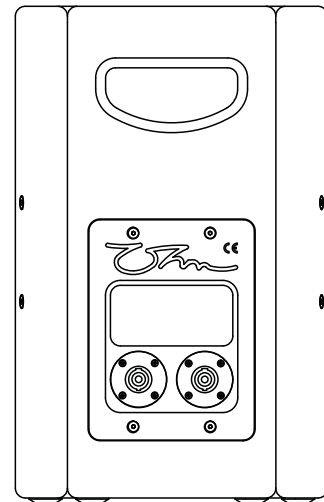
Front



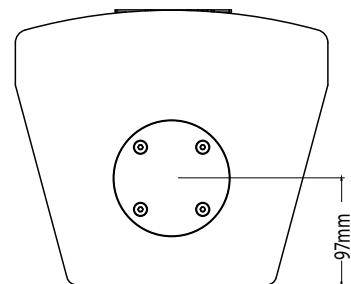
Side



Back



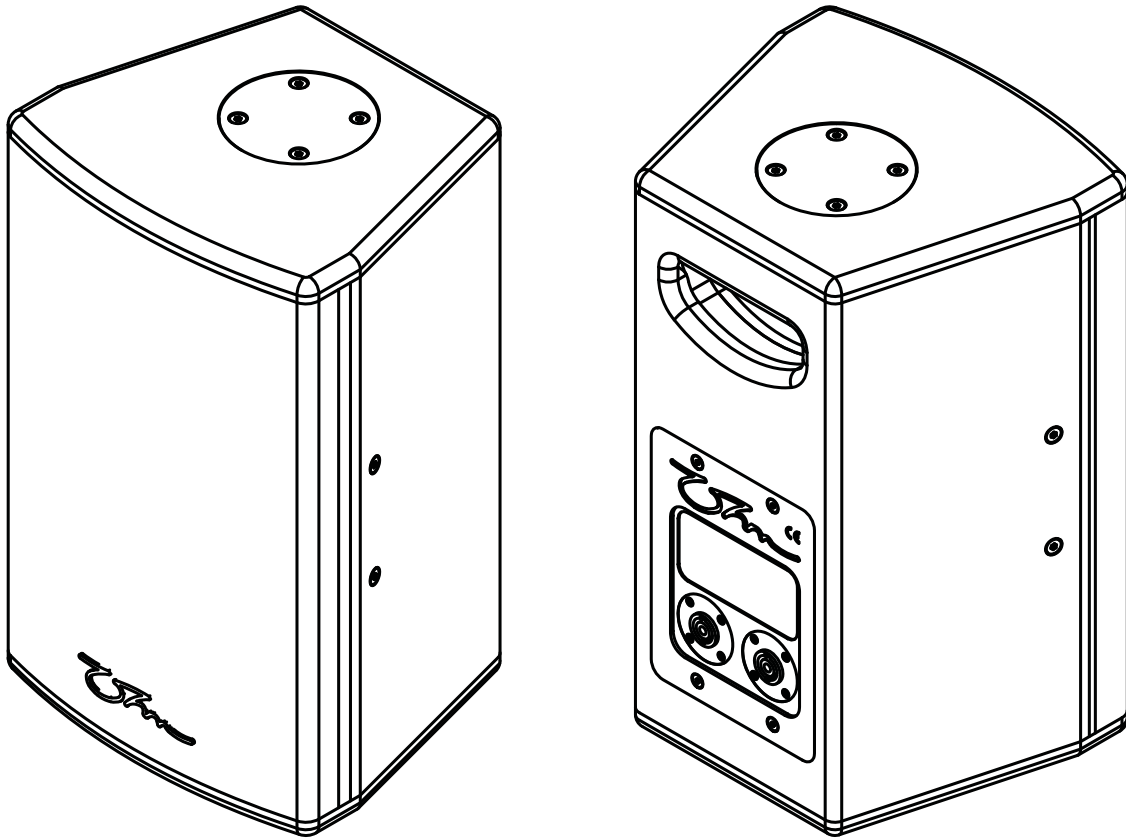
Bottom



Top

Further technical drawings for architectural requirements are available in DXF and DWG format for download on the website.

BRT-8 3D View



Accessories and Spare Parts

- Small cast aluminium top hat
- Horizontal cradle base
- Blanking plate
- BRC-8 cradle vertical
- BRC-8 cradle horizontal
- LWB-PT large wall bracket pan and tilt with 35mm spigot
- LWB large wall bracket
- SS-1 speaker stand
- TP-1 adjustable threaded pole
- TP-1P threaded Mounting Plate
- 1 x 8" low frequency driver
- 1 x 1" horn loaded compression driver
- BRT-8 steel grill assembly
- BRT-8 backplate and crossover
- Steel OHM Logo

Architects' & Engineers' specifications:

2-Way dynamic loudspeaker in a multi-purpose enclosure design, housing 1 x 8" proprietary OHM low mid bass driver, internally and externally ventilated double sided high temperature voice coil, 1" exit compression driver on rotatable 90° x 60° CD horn. Homogeneous radiating behaviour and linear response from 500 Hz. Integrated passive crossover with phase optimization. Constructed from different multi-laminated wood, eco-friendly scratch resistant paint, 4 x M6 flying points for cradle mount. omni-mounting point for stand or truss adaptor, 2 x optional horizontal cradle base plates to allow horizontal installation, skid-proof rubber feet, ergonomic carry handle, kick proof steel grill finished with external reticulated foam and Ohm logo.

Technical Data:

Frequency Response: 75 Hz - 25 kHz (-10dB), 107 Hz - 23 kHz (± 3 dB), Continuous SPL: 120 dB/1m, Program SPL 123dB/1m. Peak SPL 126dB/1 m, Power Handling: 200 Watt cont. IEC268 AES, Maximum Power Handling: 400 Watt prog. / 800 Watt peak, Impedance Nominal: 12 ohm, Dispersion Nominal: 90° x 60° (hor. x vert.), Connectors: 2 x Speakon NL4MP (1+/1-, 2+/2- links). Dimensions (H x W x D): 458 mm x 284 mm x 250 mm, Weight: 13.4 kg. Options: Durable scratch resistant black textured paint finish. RAL colours available to order.

Safety Instructions

Professional speaker systems are able to produce sound pressure levels that could harm your health.

Never stand directly in front of loudspeakers for long periods. Whilst not immediately apparent to the listener, sound pressure levels in excess of 90dB@1m can be hazardous to the hearing.

Please refer to the following advice when setting up or dismantling OHM speaker systems.

1. Be sure to leave adequate distance between speakers and the public. Refer to your local authority for Health and Safety guidance when using loudspeaker systems.
2. Be sure to have safe and stable ground for your speakers, particularly when using speaker stands.
3. When stacking speaker systems, ensure they are secured to prevent individual speakers from falling down or moving around.
4. Only use OHM mounting hardware, as this has been specified and approved by AURAL LTD, OHM (UK) LTD for use with OHM speakers.
5. When flying speakers, appropriate materials and techniques must be employed in order to safely suspend enclosures, taking care to allow for specified enclosure weight.
6. Please observe any special instructions that appear on specific loudspeaker data-sheets.
7. Check your speaker hardware and flying material regularly for any visual or mechanical failure. Replace damaged or suspect items when necessary.

Safety Instructions Cont.

8. Only use OHM DSP Solutions. Only technicians authorised by AURAL LTD, OHM (UK) LTD are qualified to program digital controllers. Take note of recommended controllers as specified on the datasheets. Do not use OHM loudspeaker systems without the correct controller. If a system fails due to incorrect controller use, warranty is void.

9. Protect your speakers and electronics from freezing and do not expose them to humidity, water or rain without protection.

OHM loudspeakers and electronics are covered against defects in workmanship or materials for a period of two (2) years from original date of purchase. At the discretion of AURAL LTD, OHM (UK) LTD, the defective item will be repaired/replaced with no charge for materials or labour. The item is to be adequately packed and dispatched, pre-paid, to an OHM authorised distributor/service centre. Unauthorised repair shall void the warranty. The OHM warranty does not cover cosmetics or finish and does not apply to any item which in OHM's opinion has failed due to user abuse, accident, modifications or any type of misuse.

Disclaimer

Copyright © 2017 AURAL LTD, OHM (UK) LTD

The content of this datasheet is protected by U.K. and foreign copyright law and is for the private use of users of OHM products. Unauthorised use of the contents of this datasheet may violate copyright, trademark and other laws.

THE CONTENT OF THIS DATASHEET IS PROVIDED FOR INFORMATIONAL PURPOSES ONLY, AND IS SUBJECT TO CHANGE WITHOUT NOTICE.

AURAL LTD, OHM (UK) LTD MAKES NO REPRESENTATION ABOUT ACCURACY, RELIABILITY OR TIME-LINES OF THE CONTENT OF THIS DATASHEET OR THE RESULTS TO BE OBTAINED FROM USING ANY PART OF SUCH CONTENT. ALL WARRANTIES, EXPRESS OR IMPLIED RELATED TO SUCH CONTENT, INCLUDING THE WARRANTY OF MERCHANT AND FITNESS FOR A PARTICULAR PURPOSE, ARE DISCLAIMED.

Technical specifications, dimensions, weights and properties do not represent guaranteed qualities. This datasheet does not include all of the details of design, production or variations of the equipment.

G.S.S.S.[™], S.A.L.T.[™] Plate Array Skeleton[™], Zero Acoustic Signature, Technology[™] and H.T.V.C.[™] are trademarks of OHM (UK) LTD. All third-party trademarks mentioned herein are the property of their respective owners.