



Visit T-audio online: [www.t-audio.eu](http://www.t-audio.eu)

LX120C  
LX350C

12-Slots Charger Hand Bag  
35-Slots Charger Carry Case

# Quick Start Guide

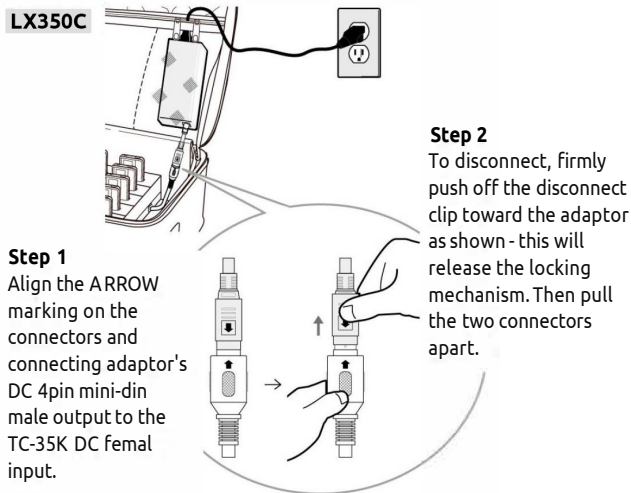


## 1. Introduction

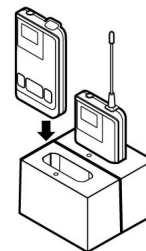
Model	Product Name	Applicable to
LX120C	12 slots charger hand bag	LX200T, LX200R, LX200S
LX350C	35 slots charger carry case	LX200T, LX200R, LX200S

## 2. Operating Instructions

2-1 Plug the DC output of the power adaptor into the charger and the AC plug into an AC outlet.

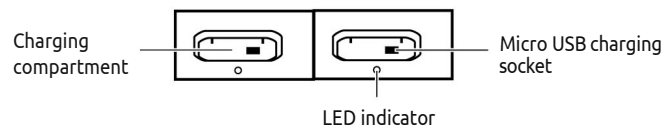


2-2 Insert the transmitter or receiver into the compartment in accordance with direction as shown in the picture below.



2-3 LED Indicators

- Red solid LED indicates the transmitter or receiver is charging.
- Green solid LED indicates the transmitter or receiver is fully charged.
- LED lights off indicates system is not charging.
- LED Flashing indicates that the system is in channel synchronization.
- Additional synchronization kits, such as LX200K, are available.



3. The charger takes approx. 6-7hr to charge from 1% to 100%

## 4. Caution

- Keep this equipment dry and secure, and away from fire.
- Do not place this equipment in direct sunlight or a humid environment.
- Do not drop or shake this equipment.